

# EFFECTS OF **LIVE MUSIC** FOR PATIENTS WITH D E M E N T I A



## BACKGROUND

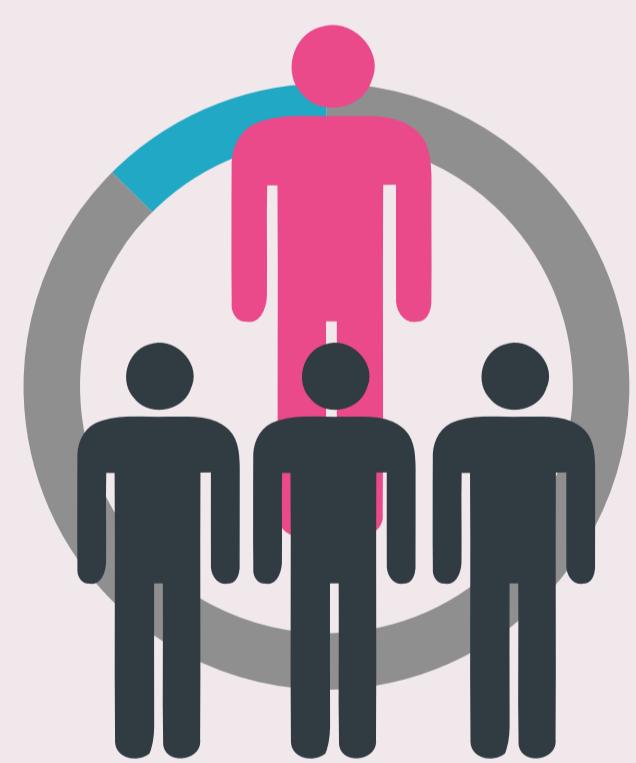
## OBJECTIVES

IN THE UK  
THERE ARE  
AROUND  
**750,000**  
PEOPLE WITH DEMENTIA



### SPECIFIC OBJECTIVES:

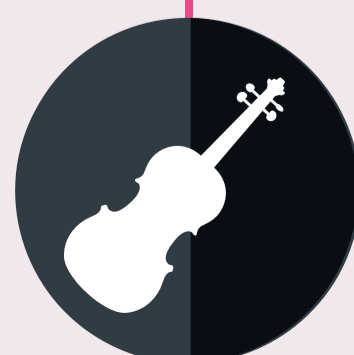
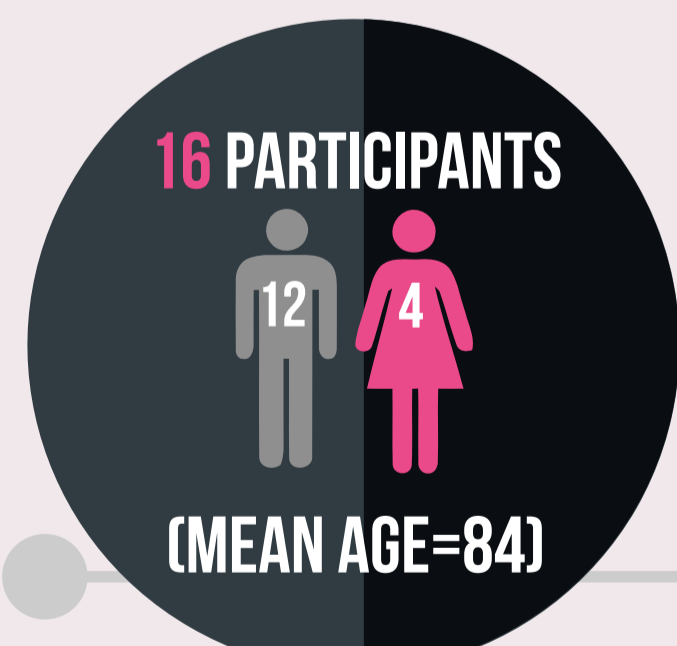
1. EXPLORE THE EFFECTS OF MUSICAL INTERVENTIONS ON AGITATED BEHAVIOURS DISPLAYED BY PATIENTS WITH DEMENTIA.
2. EXAMINE THE EFFECTS OF LIVE MUSIC ON MOOD AND ANXIETY OF PATIENTS WITH DEMENTIA.
3. INVESTIGATE THE EFFECTS THAT LIVE MUSIC CAN HAVE ON SLEEP PATTERNS OF PATIENTS WITH DEMENTIA.
4. EVALUATE THE AGITATION, ANXIETY AND MOOD SCALES AS AN OBJECTIVE MEASURE WITH A VIEW TO USING THEM IN A LARGER STUDY.



UP TO 1 IN 4 BEDS IN  
GENERAL HOSPITALS  
ARE OCCUPIED BY  
PEOPLE WITH DEMENTIA

**ROSIE MEAD**  
MUSIC COORDINATOR  
ART AT THE HEART OF  
THE RUH

LED A 5 WEEK STUDY  
EXPLORING THE EFFECTS OF  
LIVE MUSIC FOR HOSPITAL  
PATIENTS WITH DEMENTIA.



## THE RESULTS

PARTICIPANTS' MOOD WAS SIGNIFICANTLY  
IMPROVED (P=0.005)



ANXIETY WAS REDUCED BY **29%**  
AFTER THE MUSIC

ON AVERAGE AGITATION LEVELS WERE LOWER  
FOR THE PATIENTS THAT LISTENED TO THE  
MUSIC



ROSIE WILL BE EXPLORING THIS AREA  
FURTHER CONDUCTING A LARGER  
STUDY AS PART OF HER PHD  
RESEARCH AT EXETER UNIVERSITY